



**Improve Productivity
In Multiple
Business Areas
With The Right
Work Instruction
Tools!**

Are Work Instructions A Growing Problem In Your Organization?



Possibly the Missing Piece



To Your
“Design To
Manufacture”
Process



Spending Endless Hours Writing & Formatting Work Instructions?



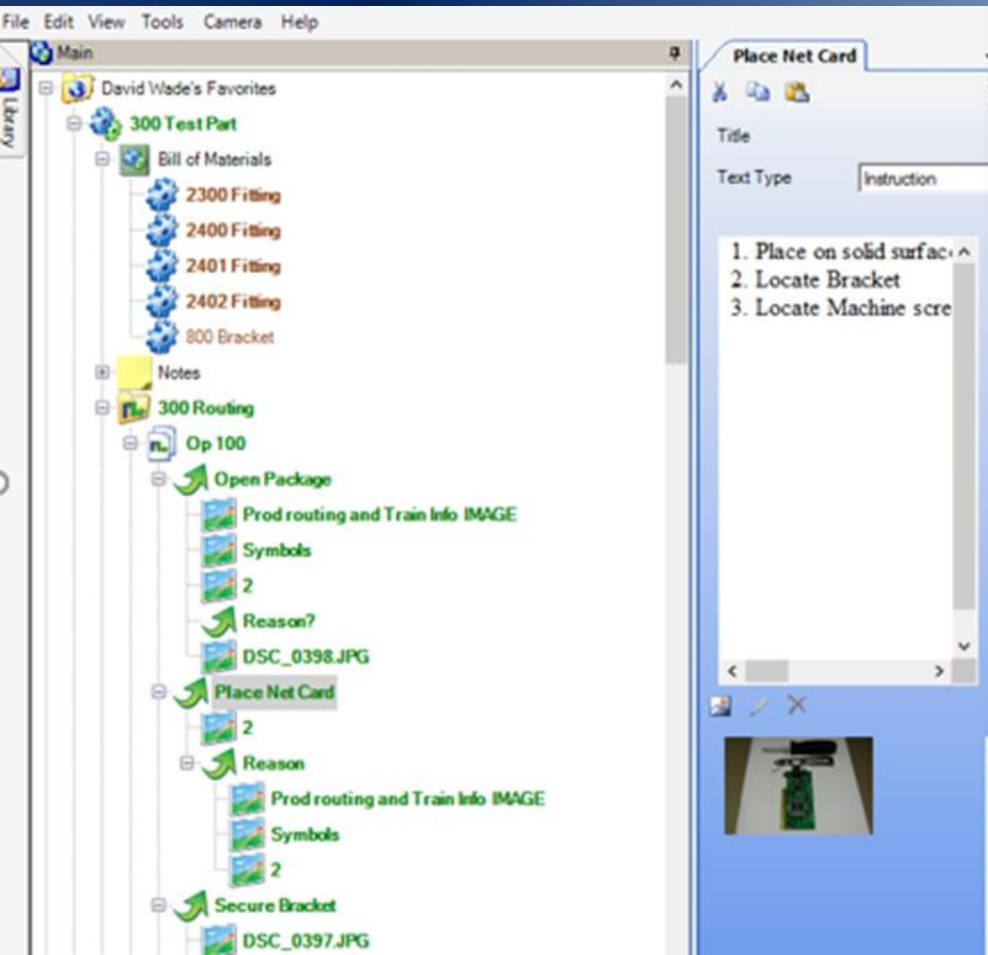


Sequence

Work Instructions...
Made *Easy!*

Engineering

Use The RIGHT Authoring Tool ...



Rapid Editing, Database Driven No Manual Formatting!



Typical Customer Results ...

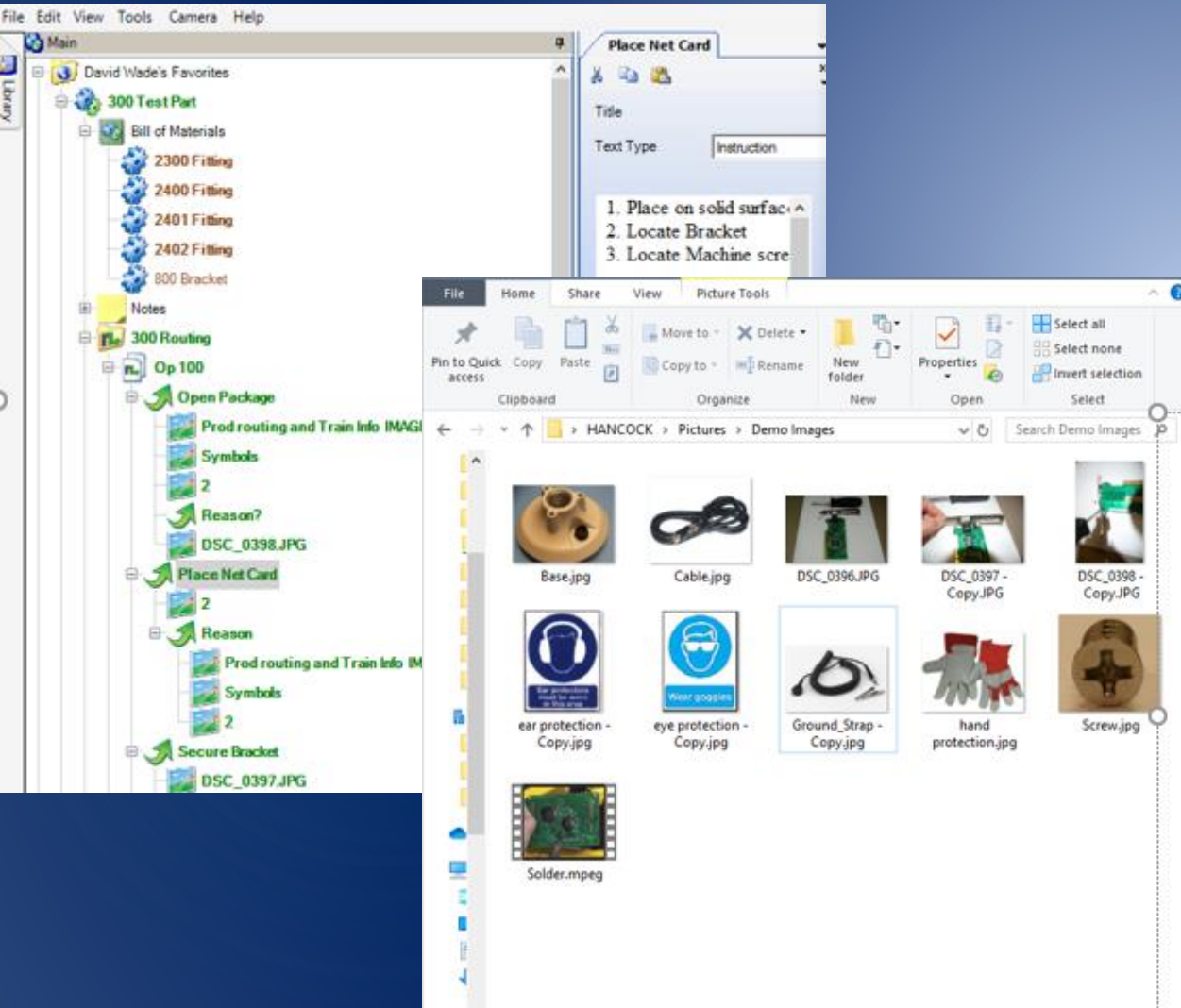
*Reduced Authoring
Hours >50%!*

Increased Capacity For Other Work!



Where Do You Spend Time Creating Work Instructions?





Formatting?
Finding Photos?
Locating The
Proper Information?



Customer Results ...



*“Reduced Change
Implementation Time 95%”*



Customer Results ...



*“Achieved
Manufacturing Engineering
Capacity Gains of 20% Due
To Redline Tracking!”*



**Let's Compare Authoring Time
Using “Office” Tools
vs.
A Better Way!**



Time Comparison: Create A Typical 10 Page Instruction Document

Using MS Office = 50-80 Hours

Using Sequence

Software = 8-10 Hours!



Significant Time Saved By ...

- *Automatic Formatting*
- *Smart Reuse of Common Content*
- *Gathering Info – Data, Photos, Videos*
- *Improved Collaboration With Others*
On Redlines, Approvals



Customer Results ...

AS&E[®]
Detect the **difference.**



*“Reduced Cycle Times
By
2 Weeks.”*



Are Change Requests Time Consuming?

Redlines
Yet Another
Problem?



Streamline Your Process on Changes & Redlines!

*Reduce Editing Time
From
Hours to Minutes!*



Customer Reports ...

*“Documentation Management
for All Departments Was 30 Hours
Per Day (3 Full Time People);
NOW, Reassigned to Other
Product Throughput Work.”*



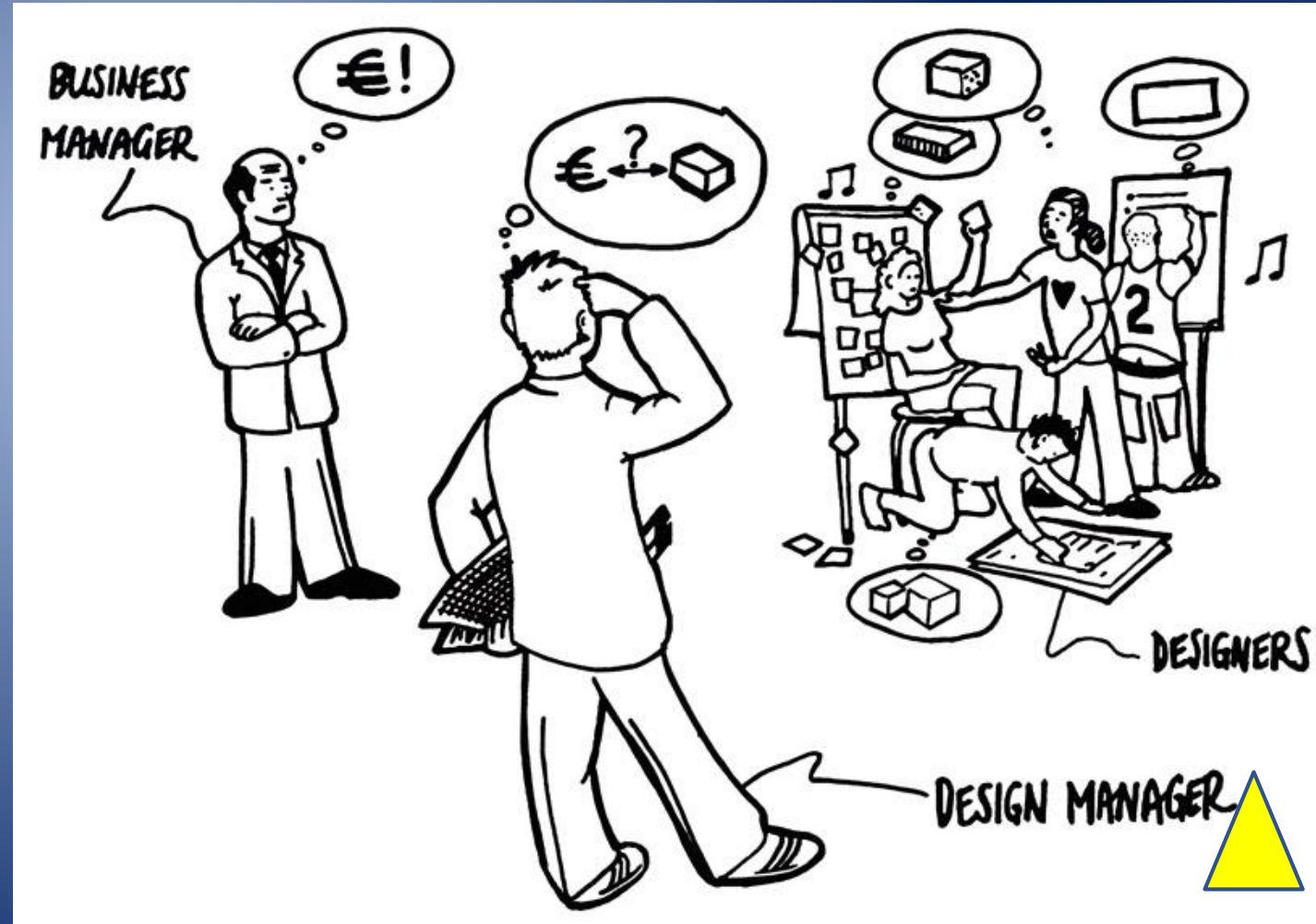
Customer Results ...



*“Engineering Changes Took
1-1/2 Hours. Today it takes
5 minutes.”*



Have Problems Managing Revisions with NO Change History?



Revision History Is Automatically Archived!

Number:300	Rev:	Version:4	Approved:9/20/2019 3:01 PM	Supersedes:9/20/2019 3:00 PM
------------	------	-----------	----------------------------	------------------------------

1 Notes

Version	Note	Approved By	Approved	Status
2	due to ECN123 BOM changed added 3 new parts.	David Wade	8/30/2019	Completed
2	'300 Test Part' was approved by 'David Wade'	David Wade	8/30/2019	Completed
3	'300 Test Part' was approved by 'David Wade'	David Wade	9/20/2019	Completed
4	'300 Test Part' was approved by 'David Wade'	David Wade	9/20/2019	Completed

2 References

Number	Revision	Title	Type	Version	Approved
300 Routing		300 Routing	Document	4	9/24/2019
500	C1	STRUT	Subassembly	2	7/18/2019

3 Bill of Materials

Part Number	Revision	Name	Qty	Unit	Reference Designator
2300		Fitting	12.000	EACH	
2400		Fitting	2.000	EACH	
2401		Fitting	5.000	EACH	A1
2402		Fitting	4.000	EACH	D1
800		Bracket	1.000	EACH	

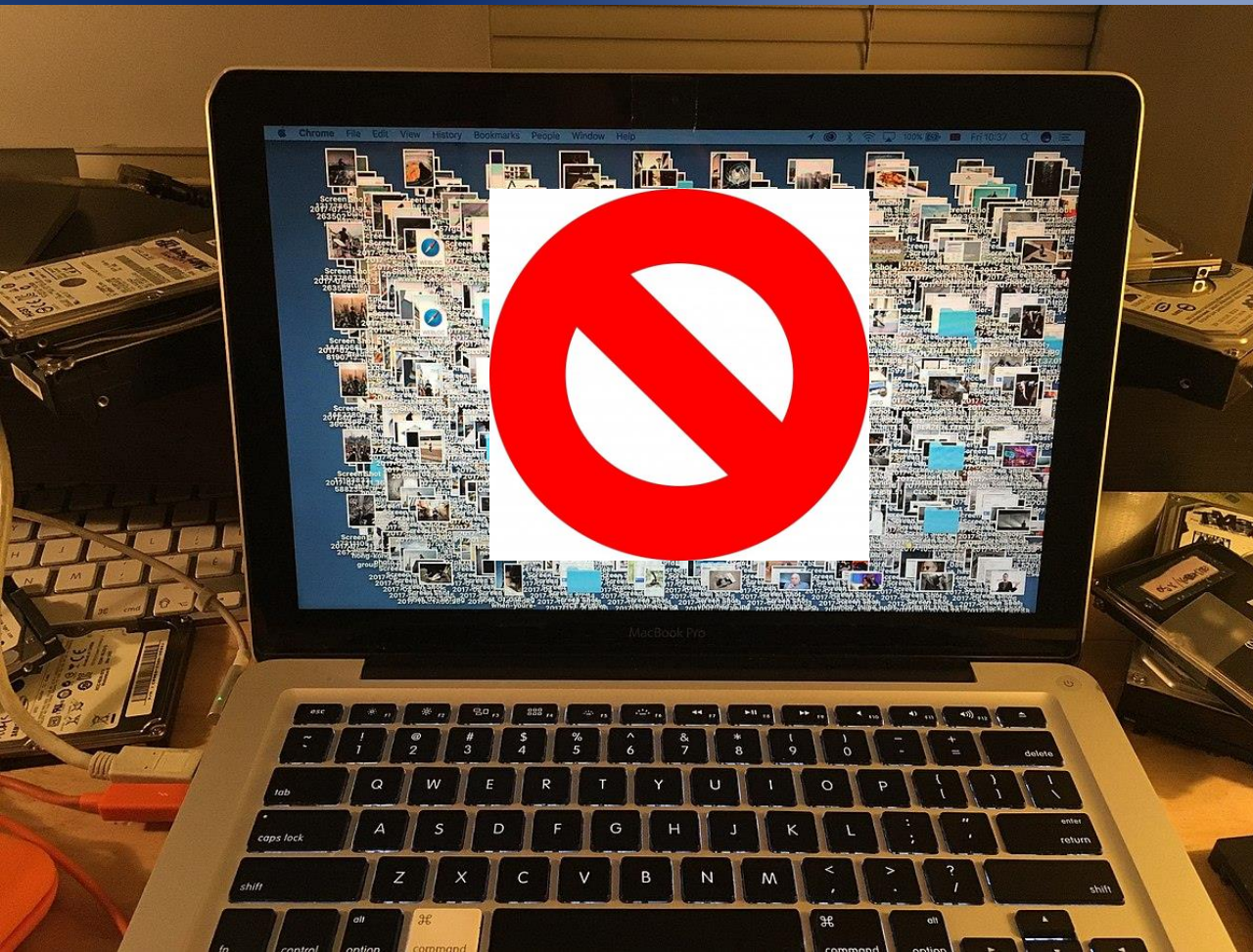
*Published &
Available When
Needed!*

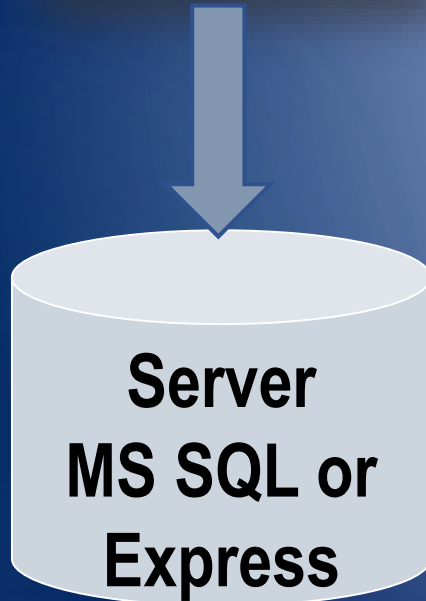


Are
Using “Office”
Products
and PDFs
Effective?



Use An
Authoring
Tool
Specifically
Designed For
Work Instructions!





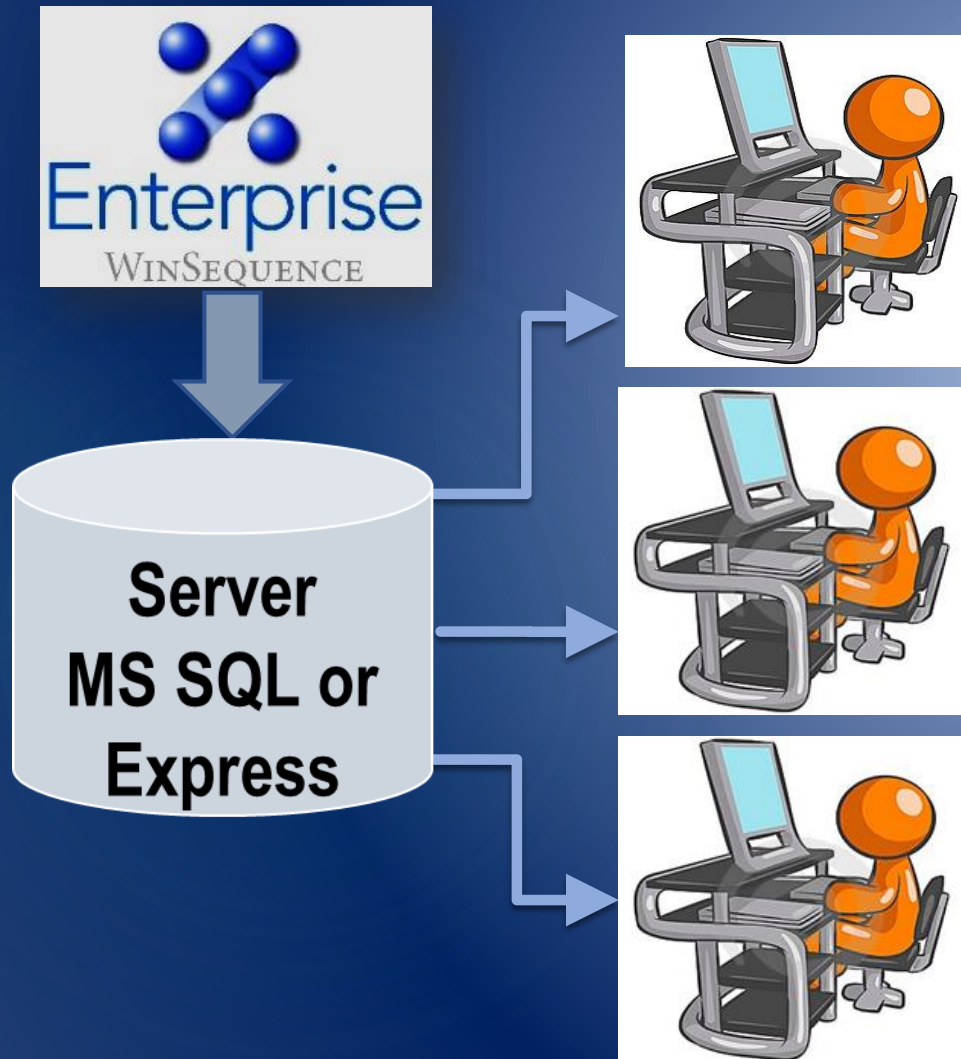
Imagine ...

**A Single Database For
ALL Authors
To Create Their
Work Instructions!**



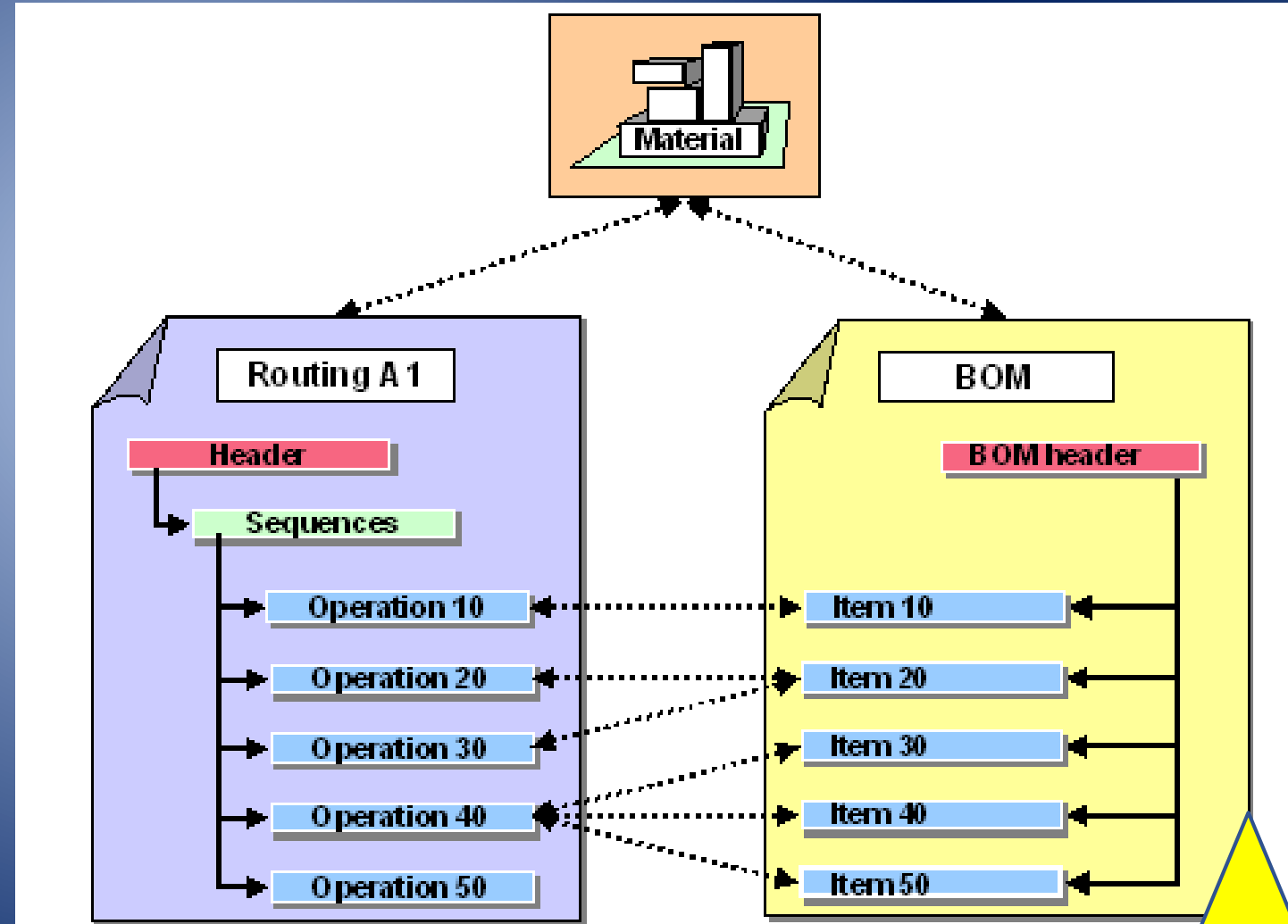
**A Collaborative,
Network Environment!**

***Full Version Control,
Approval Process,
Publish to PDF or
Real-Time Electronic
Views***





Want To
Import YOUR
ERP/MRP Data
To Your Work
Instructions?





Let ERP/MRP Maintain Your Data ...
But, Import That Data To Build
Work Instructions With Current
BOMs + Routings + Operations
Increases Accuracy,
Speeds Authoring!





Work Instructions...
Made *Easy!*

**Manufacturing
Operations**

**For
Complex
Product
Assembly**



**Still Using Paper
Instructions In
Manufacturing?**

**Ready for
Paperless?**



Do You Need Step-By-Step,

Visual Work Instructions?





Work Instructions...
Made *Easy!*

**Manufacturing
Operations**

Leading Complex Manufacturers

Prefer Simple,
Easy to Use,
Step-By-Step
Visual
Instructions



Real-Time Scrollable View Only Shop Floor Interface

Reference Library

Log Out Cam Wade

Sequence

1A Breeze

10/10/2019 8:05 AM Version 17

3.1) Open Package


1. Fold Back edges

2. Touch only outer edge

3. Don't drop any debris on material

4. Reveal the Base Mounting Base


5. Netcard




Prod routing and Train
Info IMAGE

Sharp Edge Hazard

Symbols



2



DSC_0398.JPG

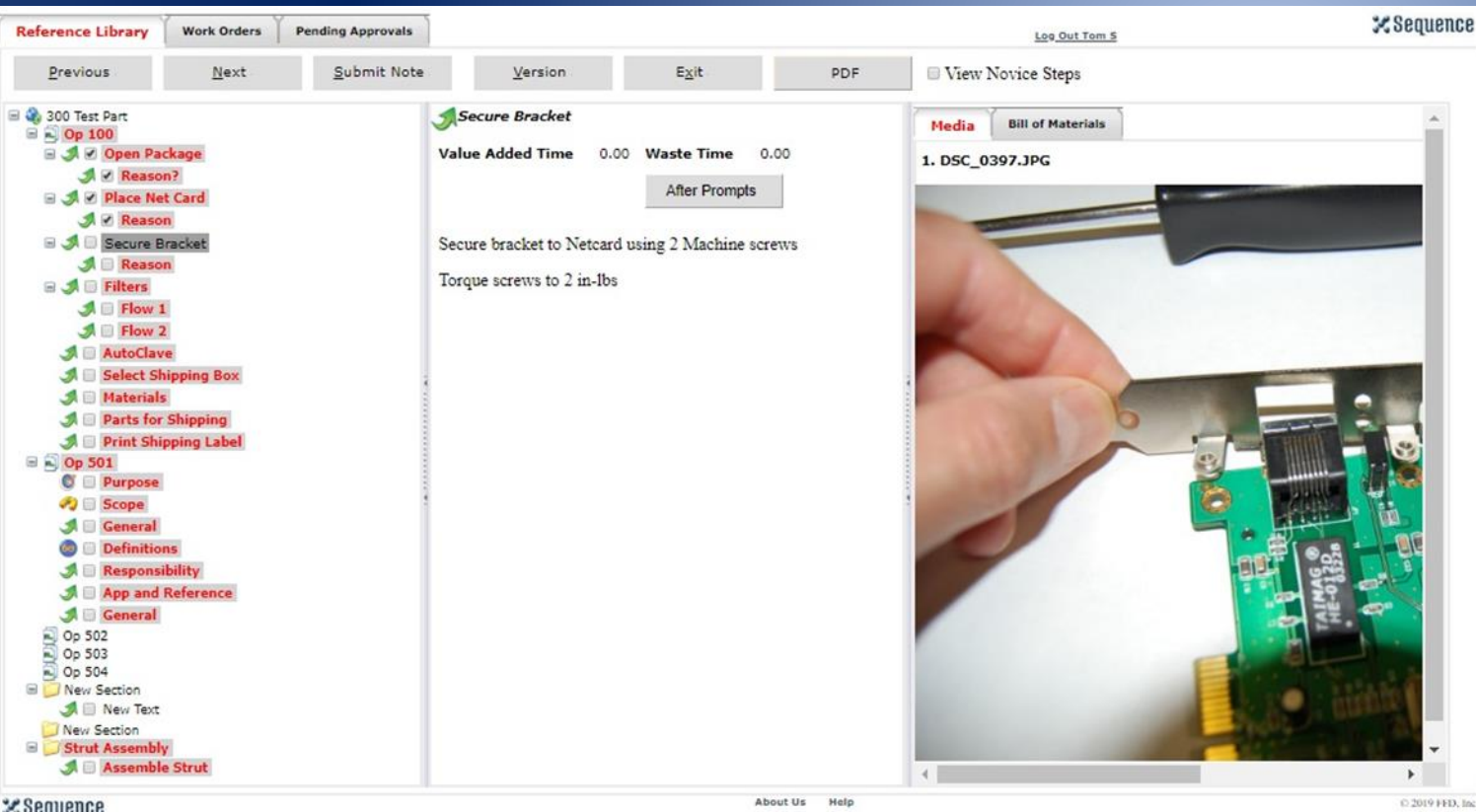
3.1.1) Reason?

1. To Keep material Flat

2. Reduce or Eliminate contaminates



Real-Time Interactive Interface With E-Signature, Manual Data Entry & More!



Step-By-Step
Instructions,
Standard
Format



Customer Results ...



*“ Real Benefits in Visual ...
Errors Are Reduced,
Cycle Time Data Available,
Helps Us Make Improvements!”*



Worried About Having Older Versions of Work Instructions On the Shop Floor?



**Eliminate Outdated Instructions &
Avoid Build Errors!**

**Reduce Time Wasted Searching
for Paper or Files to Use!**

Realize ROI – Less Than 1 Year!



Having Problems With Rework & Scrap?

Need Fast
Turn-around on
Instructions?

Excessive Rework Costs?



**Improve Results With
Step-By-Instructions
to Match Process and Work Flow ...**

***With Either Paper
Or Electronic Instructions!***



Customer Results ...



*“Reduced Rework
from 7% to 4.3%”*



**Wasting
Time
Managing
Work
Instruction
Using Folders
& Binders?**



Tired of
Printing Endless Paper
Work Instructions
for the
Shop Floor?

Wasting
Paper?



Go Paperless! Real-Time Work Instructions!

Reference Library

Log Out Cam Wade

Sequence

1A Breeze10/10/2019 8:05 AM Version 17

3.1) Open Package


1. Fold Back edges

2. Touch only outer edge


3. Don't drop any debris on material

4. Reveal the Base Mounting Base


5. Netcard



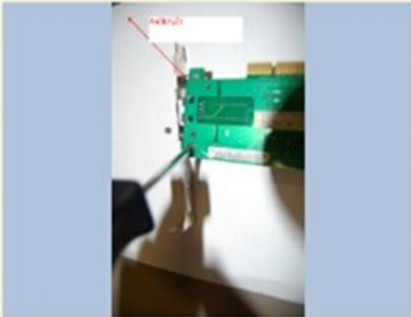
Prod routing and Train
Info IMAGE



Symbols



2



DSC_0398.JPG

3.1.1) Reason?

1. To Keep material Flat

2. Reduce or Eliminate contaminates

Customer Results ...



*“Reduced Labor for Paper
Printing ... Saving \$60K
Annually.”*



**Improve
Manual Data
Recording
From
Paper To Electronic!**





Use Keyboard or Bar Code To

- Record Relevant Process Info
- Parts or Work Completed
- Signoffs with E-Signature



Need to
Improve
Cross-Training?

Flexible Use
of Labor?



Standard Presentation of Content Across Work Cells

Reference Library Work Orders Pending Approvals Log Out Tom S

Previous Next Submit Note Version Exit PDF View Novice Steps

300 Test Part

- Op 100
 - Open Package
 - Reason?
 - Place Net Card
 - Reason
 - Secure Bracket
 - Reason
 - Filters
 - Flow 1
 - Flow 2
 - AutoClave
 - Select Shipping Box
 - Materials
 - Parts for Shipping
 - Print Shipping Label
- Op 501
 - Purpose
 - Scope
 - General
 - Definitions
 - Responsibility
 - App and Reference
 - General
- Op 502
- Op 503
- Op 504
- New Section
 - New Text
- New Section
- Strut Assembly
 - Assemble Strut

Secure Bracket

Value Added Time 0.00 Waste Time 0.00

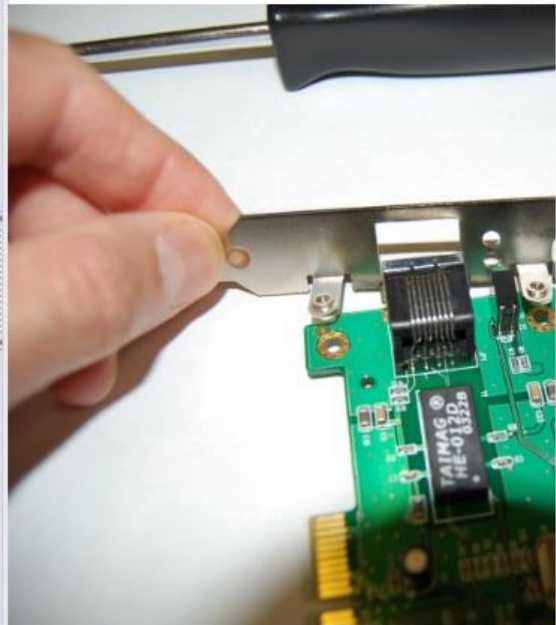
After Prompts

Secure bracket to Netcard using 2 Machine screws

Torque screws to 2 in-lbs

Media Bill of Materials

1. DSC_0397.JPG



Sequence

About Us Help

© 2019 FFD, Inc.

Want Electronic Work Instructions With Your MES Shop Floor System?



**Bring Real-Time
Electronic Work Instructions To Your MES
Shop Floor System Workstation!**

***Automatically Brings Correct Instructions
To the Right Work Center!***



Need To Increase Shop Floor Productivity?

**And
Profitability?**



Consider Real-Time Electronic Instructions!

No hunting for instructions!

No Using the Wrong Files!



Use Barcodes!

***Loads Instructions
Automatically
For THAT Work Center!***



More Customers Improvements

- *Improved Order Start Times*
- *More On-Time Deliveries*
- *Happier Employees & Customers*



Improve Quality Results



Is Product Consistency A Problem?



Are Work Instructions A Cause?



Step-By-Step Work Instructions Significantly Reduce

- *Customer Complaints*
- *Excessive Rework & Returns*
- *Increased Shipping Costs*
- *Late Deliveries*
- *Lost Orders!*



Are Poor Work Instructions Causing Non-Conformance?

NON-CONFORMANCE STATUS REPORT				
SI No.	NCR No.	LOCATION	CONTENT	Status
1	56	Column @ Block-A GF GY02/X14	Out of Plumb	closed
2	43	B-F from Mez. To 2nd Floor	of Position Columns	sub
3	40	GF B-C G(X31/Y03)	Plumb Column	closed
4	38	B-E First flr GX24/Y18	of Position Columns	closed
5	35	B-E GF to Mezz. G X33-34/Y17-18	ed out of Plumb	closed
6	32	B-D Corewall 19 G X32/Y12	major pours in conc	closed
7	29	GF GL X18 bet Y14 and Y15	and defective conc	closed
8	28	GF G X24 bet Y15-Y16	nderable offset)	closed
9	27	GF G X24-X25/Y14	fective conc	closed
10	22	GF G X29-X30	ulging	closed
11	21	G X23/X24 Y19-20 X25/Y18-19	3 Columns out of position and sizes are not as aproved drawings	closed
12	10	Raft floor Finishing	Undulation found on Raft bay 14&17	Open
13	12	Raft floor Finishing on bay 25	Many undulations/level diff./ Foot prints bay 25	Open



Still Recording & Signing Results Via Paper Reports?

Is Compliance
Driving
E-Signature &
Electronic
Records?



Electronic Work Instructions

*Enables CFR21 Part II
Signoffs & Operator
Data Collection!*



With Sequence Software, Customers Report

- *Reduced Non-Conformance*
- *Met Regulatory Compliance*
- *Increased customer satisfaction!*



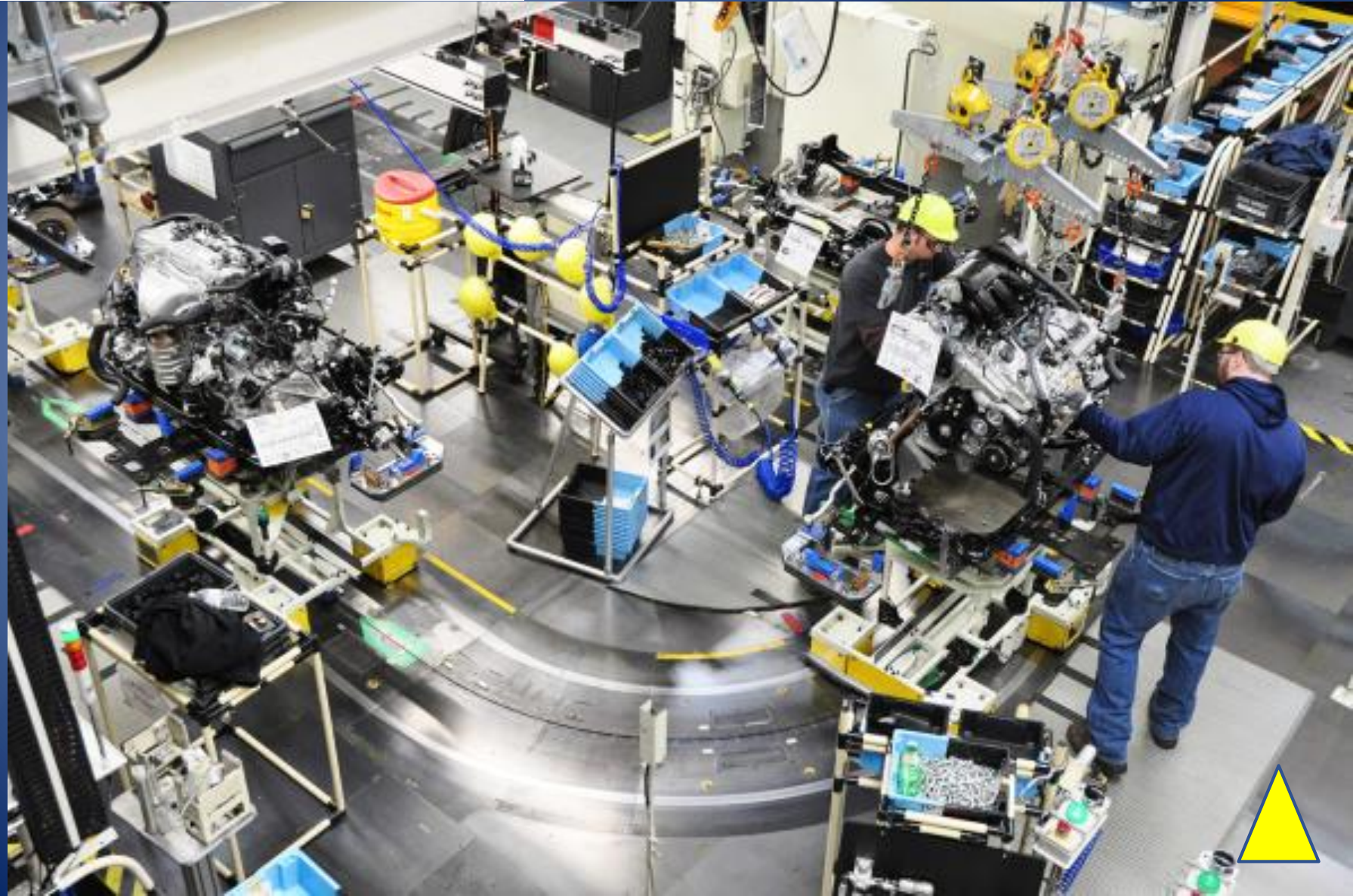
Increased Demands with Regulatory Compliance and Customers?



Supports Regulatory Compliance with Auditable History



Improve
Training
With
Standard,
Visual
Instructions



Are Non-Conformance Issues Due to Training?

Using
Difficult To Follow
Instructions?



**Train Workers with
“Easy To Understand”
Step-By-Step
Work Instructions ...**

***Create Consistent Results and
Increased Productivity!***



Reference Library Work Orders Pending Approvals Log Out Tom S Sequence

Previous Next Submit Note Version Exit PDF View Novice Steps

300 Test Part

- Op 100
 - Open Package
 - Reason?
 - Place Net Card
 - Reason
 - Secure Bracket
 - Reason
 - Filters
 - Flow 1
 - Flow 2
 - AutoClave
 - Select Shipping Box
 - Materials
 - Parts for Shipping
 - Print Shipping Label
- Op 501
 - Purpose
 - Scope
 - General
 - Definitions
 - Responsibility
 - App and Reference
 - General
- Op 502
- Op 503
- Op 504
- New Section
 - New Text
- New Section
- Strut Assembly
 - Assemble Strut

Secure Bracket

Value Added Time 0.00 Waste Time 0.00

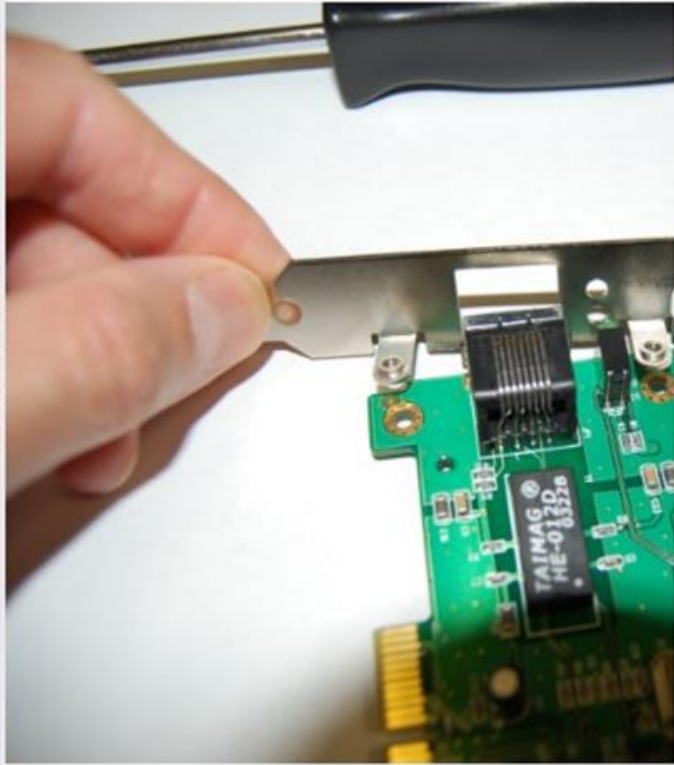
After Prompts

Secure bracket to Netcard using 2 Machine screws

Torque screws to 2 in-lbs

Media Bill of Materials

1. DSC_0397.JPG



Sequence About Us Help © 2019 FED, Inc.

Standard
Format,
Process,
Tasks
Media



Need To Improve Training Documents?

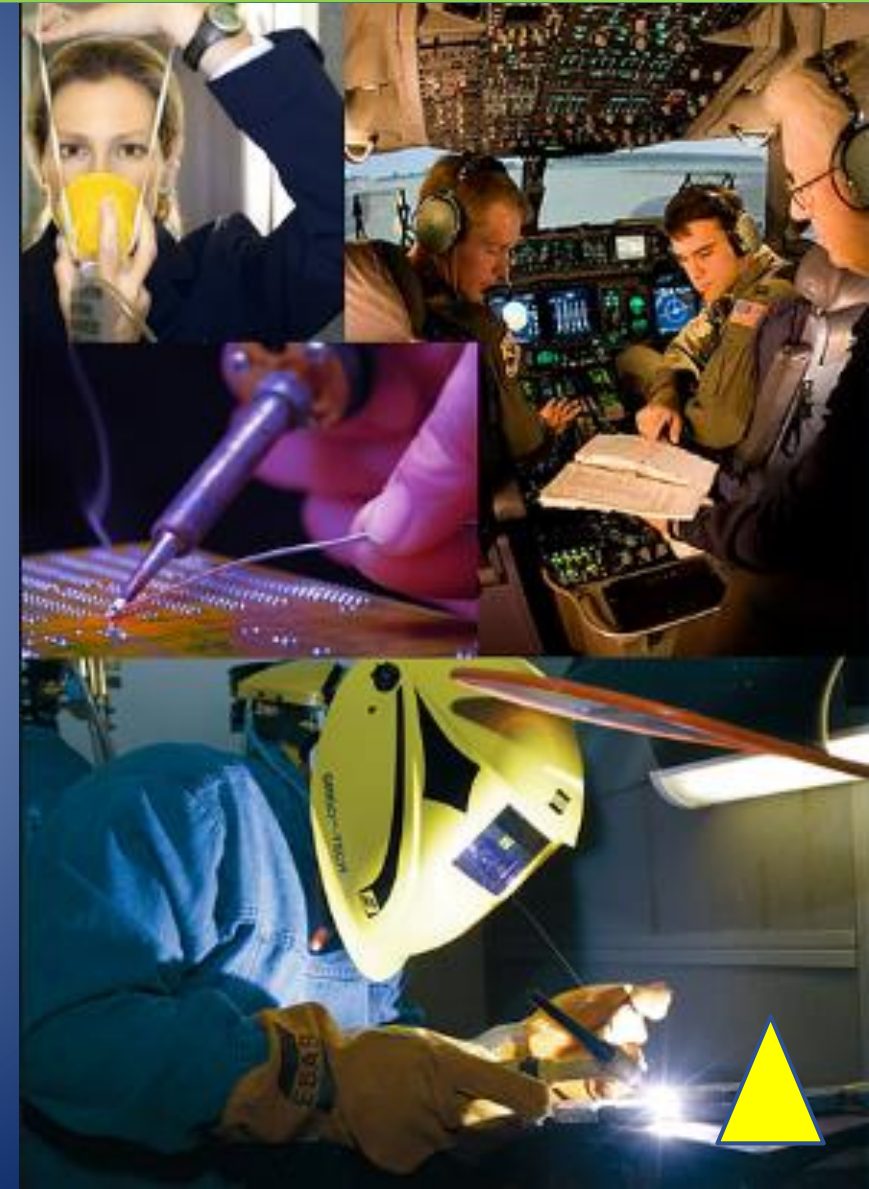
Align With
Assembly
Skills &
Tasks?



**Customize Your Training Aids,
Use A Consistent, Standard Format
For All Process and Task Training!**



**Are More
New Employees
or
New Products
Increasing Your Training
Demands?**



**Get Standard
Work Instructions
Consistent Format ...**

***On Paper, OR
With Real-Time Electronic
Interface***



**Considering
“Training Within
Industry”
(TWI)
Methodology?**



**TWI Training Aids,
Consistent Format
For All
Process and Task Training!**





A Solution That Delivers Cost Savings, Increased Profits, and Continuous Improvements! **Achieve ROI – Less Than 1 Year!**

- ***Significant Savings in Engineering Time, Increased Capacity***
- ***Reduced Shop Floor Errors & Rework / Repair Costs***
- ***Increased Customer Satisfaction, Reduced Returns and Lost Orders***
- ***More On-Time Deliveries***
- ***Increased Quality***
- ***Reduced Printing Costs***
- ***Increased Compliance, Reduced Risk***





Work Instructions...
Made *Easy!*

**Have Questions?
Our Engineers Are Available!**

**Ask Us For A Demonstration
To See More!**

